

data sheet

71-AR series

bronze standard port ball valve with actuator ready ISO mounting pad



description

The "Apollo"® 71-AR series is a heavy duty bronze standard port ball valve with actuator ready ISO mounting pad. Equipped with a live loaded multi-piece adjustable packing set. Proudly manufactured in our South Carolina production facilities.

size range connections

- ¾" - 3"
- threaded

configurations

- 71-AR series - standard

approvals

- MSS SP-110
- CRN: 0C10908.5C
- ISO 5211
- Buy American Act (BAA)
- Build America Buy America (BABA) Act



this specification is provided for reference only. we reserve the right to change any portion of this specification without notice and without incurring obligation to make such changes to Aalberts integrated piping systems products previously or subsequently sold.

Aalberts integrated piping systems

10715 Sikes Place / suite 200 / Charlotte / NC / 28277

aalberts-ips.us

features

- multi-piece packing set
- ISO 5211 mounting pad
- stainless ball & stem
- blowout-proof stem design
- adjustable packing gland
- live loaded packing
- manufactured in the USA - BABA and BAA compliant

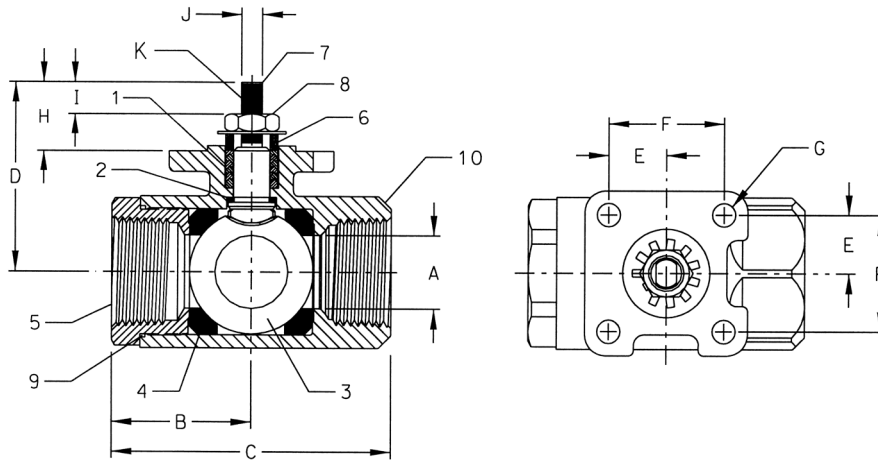
component	material
body	bronze, ASTM B584-C84400
retainer	brass, ASTM B16-C36000 (¾" - 1") bronze, ASTM B584-C84400 (1 ¼" - 3")
ball	stainless steel, ASTM A276-316
seat (2)	multifill PTFE
stem	stainless steel, ASTM A276-316
stem packing	MPTFE
stem bearing	PEEK/PTFE
jam nut	stainless steel, ASTM A276-316
gland	brass, ASTM B16-C36000
bellville washers	stainless steel, ASTM A276-316
body seal (1 ¼" - 3")	PTFE

performance rating

CWP	SWP	temperature	vacuum service
600 psig	250 psig	500°F (maximum temperature)	29 in. Hg

job name	
job location	
engineer	
contractor	
tag	
PO#	
rep	
wholesaler dist	

data sheet



dimensions

part number	size	a	b	c	d	e	f	g	h	i	j (flats)	k (threads) UNF	weight	Cv
71-AR-464	¾"	0.68"	1.50"	3.00"	2.12"	0.70"	1.39"	0.28"	0.84"	0.37"	0.247/0.249	¾-24	1.63 lbs	30
71-AR-564	1"	0.87"	1.68"	3.37"	2.25"	0.70"	1.39"	0.28"	0.82"	0.37"	0.247/0.249	¾-24	1.86 lbs	43
71-AR-664	1½"	1.00"	2.00"	4.00"	2.62"	0.98"	1.95"	0.34"	1.16"	0.37"	0.370/0.372	½-18	3.39 lbs	48
71-AR-764	1½"	1.25"	2.18"	4.37"	2.87"	0.98"	1.95"	0.34"	1.16"	0.37"	0.370/0.372	½-18	4.68 lbs	84
71-AR-864	2"	1.50"	2.34"	4.68"	3.06"	0.98"	1.95"	0.34"	1.16"	0.37"	0.370/0.372	½-18	5.72 lbs	108
71-AR-964	2½"	2.00"	3.12"	6.25"	3.85"	0.98"	1.95"	0.34"	1.16"	0.37"	0.370/0.372	½-18	5.72 lbs	190
71-AR-064	3"	2.50"	3.37"	6.75"	4.12"	0.98"	1.95"	0.34"	1.16"	0.37"	0.370/0.372"	½-18	18.60 lbs	370

options

option	component	size
(-14)	side vented ball (uni-directional)	all
(-24)	graphite packing, PTFE body seal, RPTFE bearing (API 607, 6th edition, ISO 10497:2010)	¾" to 2"
(-27)	ss latch-lock lever & nut (standard configuration)	all
(-35)	PTFE trim	all
(-57)	oxygen cleaned	all
(-64)	standard configuration	all

data sheet

pressure/temperature ratings

engineering data

600 CWP

bronze ASTM B584

graph 1

