

data sheet

# 77-200 series

bronze heavy pattern full port solder ball valve



## features

- heavy duty cast bronze body
- full flow, minimum pressure drop
- adjustable packing
- blowout-proof stem design
- RPTFE seats and stem packing
- manufactured in the USA - BABA and BAA compliant
- 100% pressure tested

## description

The "Apollo"® 77-200 series is designed to be soldered into lines without disassembly. This allows a factory tested valve to be installed without disturbing the seats and seals. Designed for soft solder with melt points less than 500°F.

## size range

- ¾" - 2 ½"

## connections

- solder

## configurations

- 77-200 series - standard
- 77-240 series - 316 ss ball and stem

## approvals

- MSS SP-110
- CRN: 0C10908.5C
- Buy American Act (BAA)
- Build America Buy America (BABA) Act

component	material
body	bronze, ASTM B584-C84400
retainer	brass, ASTM B16, C36000 (¾" - 1") bronze, ASTM B584-C84400 (1 ¼" - 2 ½")
ball	stainless steel, ASTM A276-316 or brass, ASTM B16 C36000
seat (2)	RPTFE
stem	brass, ASTM B16, C36000
gland nut	brass, ASTM B16, C36000
stem packing	MPTFE
stem bearing	RPTFE
lever and grip	steel, zinc plated with vinyl
lever nut	steel, zinc plated
body seal (1 ¼" - 2 ½")	PTFE

## performance rating

CWP	temperature	vacuum service
600 psig	500°F (maximum temperature)	29 in. Hg



this specification is provided for reference only. we reserve the right to change any portion of this specification without notice and without incurring obligation to make such changes to Aalberts integrated piping systems products previously or subsequently sold.

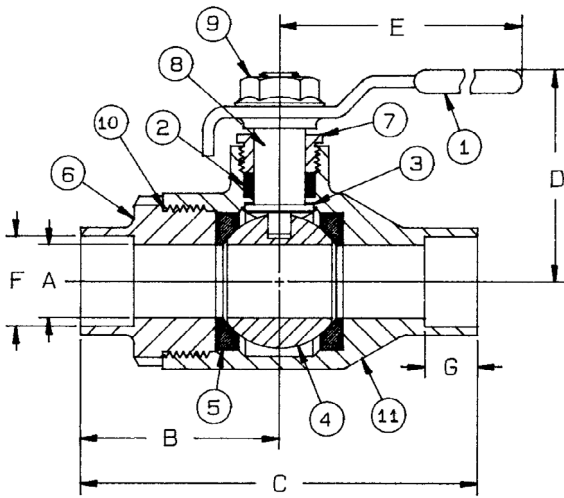
## Aalberts integrated piping systems

10715 Sikes Place / suite 200 / Charlotte / NC / 28277

[aalberts-ips.us](http://aalberts-ips.us)

job name	
job location	
engineer	
contractor	
tag	
PO#	
rep	
wholesaler dist	

data sheet



dimensions

part number	size	a	b	c	d	e	f	g	weight	Cv
77-204-01	¾"	0.81"	2.28"	4.28"	2.12"	4.87"	0.88"	0.75"	1.65 lbs	51
77-205-01	1"	1.00"	2.72"	4.64"	2.62"	5.50"	1.13"	0.90"	2.99 lbs	68
77-206-01	1¼"	1.25"	2.60"	5.15"	2.87"	5.50"	1.38"	0.96"	4.55 lbs	125
77-207-01	1½"	1.50"	3.00"	6.00"	3.34"	8.00"	1.63"	1.09"	6.04 lbs	177
77-208-01	2"	2.00"	3.62"	7.24"	3.71"	8.00"	2.13"	1.34"	10.58 lbs	389
77-209-01	2½"	2.50"	3.93"	7.87"	4.12"	8.00"	2.63"	1.48"	15.53 lbs	503

options

option	component	size
(-04)	2 ¼" stem extension (carbon steel, zinc plated)	all
(-07)	steel tee handle	¼" to 1 ½"
(-15)	wheel handle, steel	¼" to 1 ¼"
(-27)	ss latch-lock lever & nut (standard configuration)	all
(-57)	oxygen cleaned	all