

data sheet

# 73-300 series

double union ended carbon steel ball valve



## features

- heavy duty quarter turn lever
- reinforced seats and seals
- steel barstock design
- easy installation and maintenance
- blowout-proof stem design
- adjustable packing gland
- zinc phosphate corrosion protection
- fire safe to API 607 (requires -24 suffix)
- CSA CGA 3.16-M88 (requires "GS" suffix)

## description

The "Apollo"® 73-300 model ball valve ¼" to 2" features female NPT thread, 3000 CWP (psig). Cold non-shock with 250 psig saturated steam and vacuum service to 29 inches Hg. MSS SP-110 compliant.

## size range

- ¼" - 2"

## connections

- threaded

## configurations

- 73-300 series - standard

## approvals

- MSS SP-110 ball valves
- CSA CGA 3.16-M88
- IAPMO/ANSI Z1157 ball valves

component	material
body	A108-carbon steel
retainer	A108-carbon steel
ball	ASTM A276-316 stainless steel
seat (2)	RPTFE
stem	ASTM A108-carbon steel, zinc phosphate finish or A276-316 stainless steel
gland nut	A108-carbon steel
stem packing	RPTFE
stem bearing	RPTFE
lever and grip	steel, zinc plated with vinyl
retainer seal	RPTFE
lever nut	steel, zinc plated
tailpiece (2)	A108-carbon steel
union nut (2)	A108-carbon steel
seat holder	A108-carbon steel
union seal (2)	RPTFE

## performance rating

CWP	SWP	temperature	vacuum service
3000 psig	250 psig (maximum)	500°F (maximum temperature)	29 in. Hg



this specification is provided for reference only. we reserve the right to change any portion of this specification without notice and without incurring obligation to make such changes to Aalberts integrated piping systems products previously or subsequently sold.

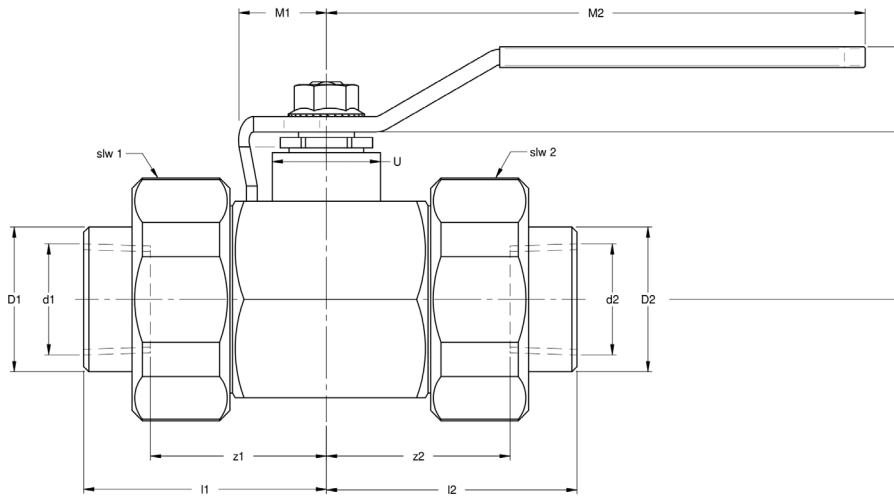
## Aalberts integrated piping systems

10715 Sikes Place / suite 200 / Charlotte / NC / 28277

[aalberts-ips.us](http://aalberts-ips.us)

job name	
job location	
engineer	
contractor	
tag	
PO#	
rep	
wholesaler dist	

data sheet



dimensions

part number	size	bore size	d1	d2	I1	I2	z1	z2	M1	M2	V	Y	weight
73-301-01	¼"	0.37"	0.54"	0.54"	2.49"	2.49"	2.11"	2.11"	1.02"	5.53"	1.45"	1.01"	3.51 lbs
73-302-01	⅜"	0.37"	0.68"	0.68"	2.49"	2.49"	2.08"	2.08"	1.02"	5.53"	1.45"	1.01"	3.45 lbs
73-303-01	½"	0.50"	0.84"	0.84"	2.50"	2.50"	1.82"	1.82"	1.02"	5.53"	1.45"	1.01"	3.35 lbs
73-304-01	¾"	0.68"	1.05"	1.05"	2.65"	2.49"	1.84"	1.68"	1.02"	5.53"	1.60"	1.01"	4.48 lbs
73-305-01	1"	0.87"	1.32"	1.32"	2.94"	3.04"	2.13"	2.23"	1.06"	6.53"	2.02"	1.03"	7.04 lbs
73-306-01	1 ¼"	1.00"	1.66"	1.66"	2.89"	3.23"	2.02"	2.36"	1.06"	7.91"	2.27"	1.07"	9.96 lbs
73-307-01	1 ½"	1.25"	1.90"	1.90"	3.54"	3.67"	2.54"	2.67"	1.06"	7.91"	2.46"	1.07"	14.83 lbs
73-308-01	2"	2.00"	2.38"	2.38"	3.75"	3.75"	2.75"	2.75"	1.64"	8.91"	2.85"	1.25"	20.50 lbs

options

option	component	size
(-01)	standard configuration	all
(-P-01)	BSPP (parallel) thread connection	all
(-T-01)	BSPT (tapered) thread connection	all
(-02)	stem grounded	all
(-07)	steel tee handle	¼" to 1 ½"
(-14)	side vented ball (uni-directional)	all
(-15)	wheel handle, steel	¼" to 1"
(-18)	chain lever - vertical	all
(-19)	lock plate	all

option	component	size
(-21)	UHMWPE trim (non-PTFE)	all
(-22)	viton union seals	all
(-27)	ss latch-lock lever & nut	all
(-29)	graphite packing & seals	all
(-45)	less lever & nut	all
(-60)	static grounded ball & stem	all
(-63)	threaded x socket weld	all
(-64)	250# steam trim (MPTFE seats & packing)	all
(-UA)	AIS (American iron & steel) compliant	all

data sheet

pressure/temperature ratings  
engineering data

3000 CWP

(CS) ASTM A216-WCB or ASTM A105 or ASTM A108

graph 1

